

SCOPE OF WORK:

PROJECT IS TO ADD STORAGE SPACE ON THE FIRST AND SECOND PARKING LEVELS. TO REMOVE A SIX FOOT FENCE ALONG KUHIO AVE SIDE OF STRUCTURE. PAINT STRIP ADA PARKING SPACES. TO SATISFY VIOLATION # 2019/NOV-09-061.

SCOPE OF WORK TO INCLUDE DEMO OF CURRENT BIKE PARKING AREA, DEMO OF SURFBOARD STORAGE AREA, DEMO OF STORAGE UTILITY AREAS IN PARKING FLOORS 1 AND 2 (SEE PLAN NOTES), REMOVING PARALLEL PARKING ON ALL FLOORS, RE-PAINTING AND SIGNAGE FOR ALL ADA PARKING TO MEET CURRENT STANDARDS. CONSTRUCTING A NEW BIKE STORAGE AREA WHICH INCLUDES LOCKABLE SURFBOARD STORAGE RACKS. DEMO OF FENCE IN FRONT ALONG KUHIO AVE.

ZONING INFO:

CONSTRUCTION TYPE: 1-A
 CODE: 2006 IBC
 LOT: 99,802 S.F. (2.29 ACRE)
 HEIGHT: 37 STORIES
 SPRINKLER: FULLY SPRINKLER

PARKING REQUIRED:

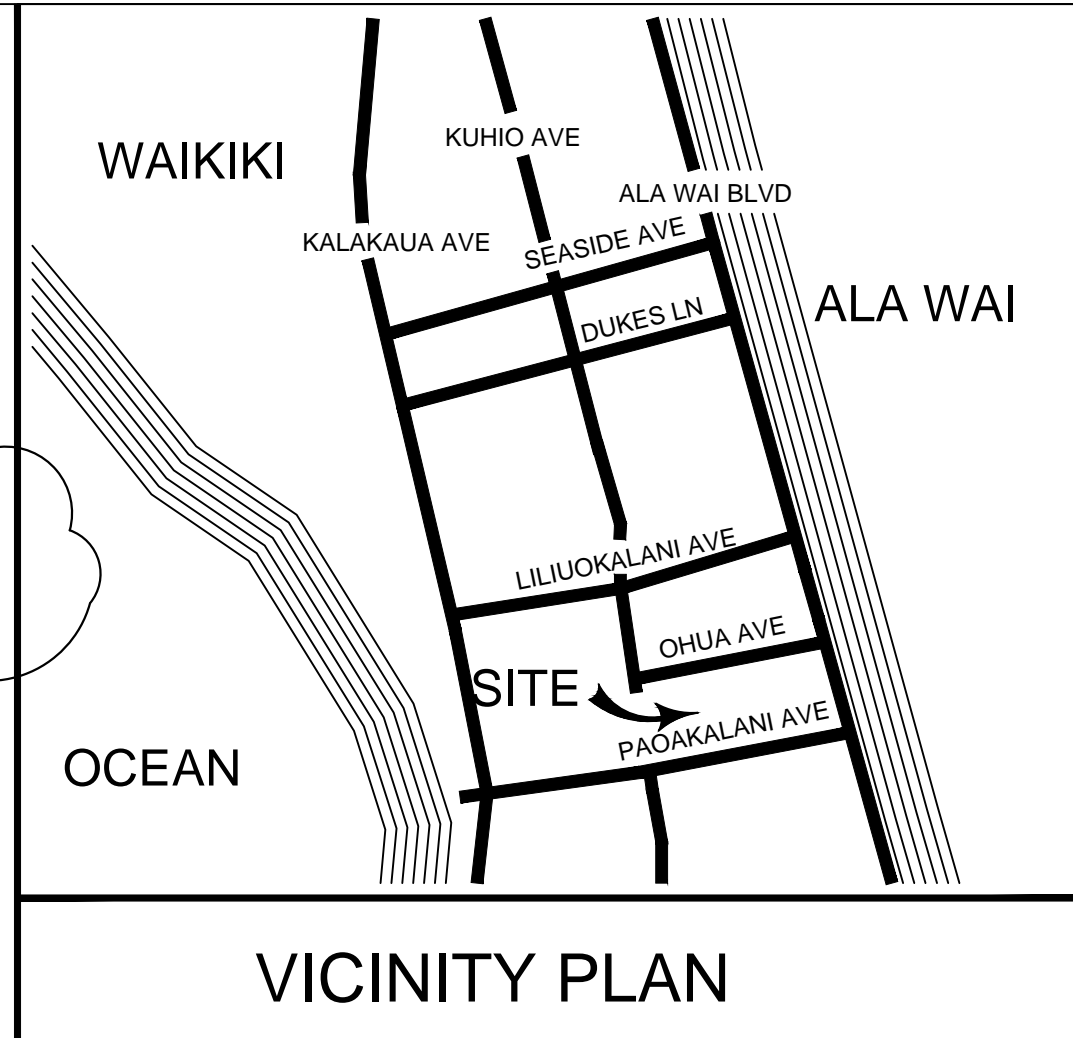
879 STALLS
 21 ADA STALLS INCLUDED IN TOTAL NUMBER OF STALLS

887 UNITS @1/UNIT = 877 STALLS
 ACCESSORY MINI MART = 2

PARKING PROVIDED:

1,042 STALLS (PER 91/VAR-51)
 THIS PROJECT IS REMOVING/RESTRIPIING FOR ADA ACCESS AISLE = -15 STALLS

1,027 STALLS



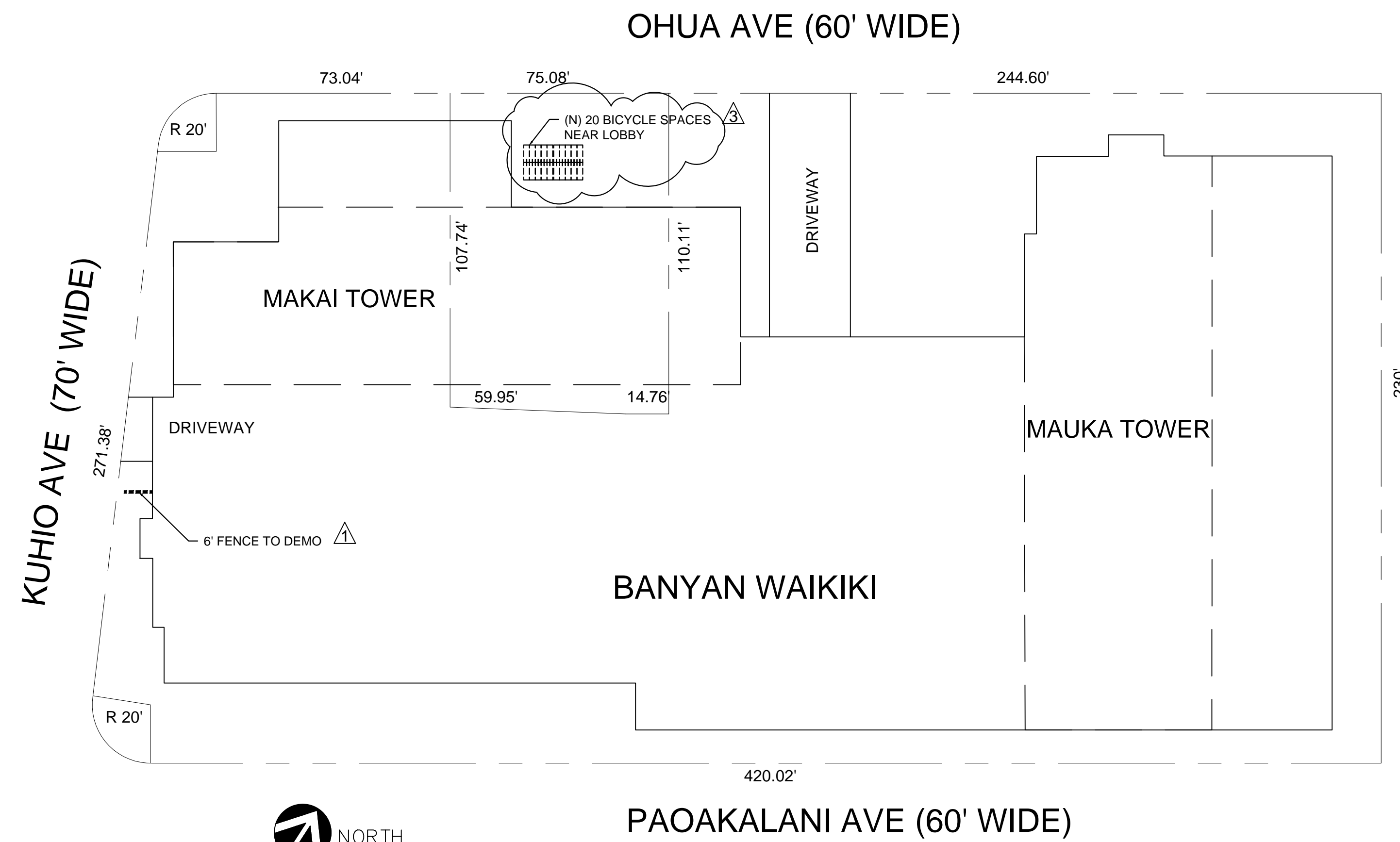
WAIKIKI BANYAN CONDO PARKING

239 OHUA AVE., WAIKIKI, HI 96815
 TMK: 2-6-025:005

GRAPHIC SCALES

SHEET INDEX

- A100 SITE PLAN
- A200 (E) 1ST LEVEL PARKING
- A300 (E) 2ND LEVEL PARKING
- A400 (E) 3RD LEVEL PARKING
- A500 (E) 4TH LEVEL PARKING
- A600 (E) 5TH LEVEL PARKING
- A700 DETAILS



1 PLOT PLAN
 A-1 SCALE: NTS

WAIKIKI BANYAN CONDO PARKING
 INTERIOR ALTERATION
 239 OHUA AVE., WAIKIKI, HI 96815
 TMK: 2-6-025:005

DRAWN BY: CHECKED BY: PROJECT #: ISSUE DATE: REVISIONS: △ DPP 6-9-20 △ DPP 8-20-20 △ DPP 4-15-21	John Lawson AIA P.O.Box 1572 Aiea HI 96701 (808) 436-9999 xfastcad@yahoo.com Architecture Permitting Planning Interiors	THIS WORK WAS PREPARED BY ME OR UNDER MY SUPERVISION AND CONSTRUCTION WILL BE UNDER MY OBSERVATION EXP: 04/30/2022	SHEET TITLE: PLOT PLAN MAPS NOTES SHEET NUMBER: A100
---	---	---	---